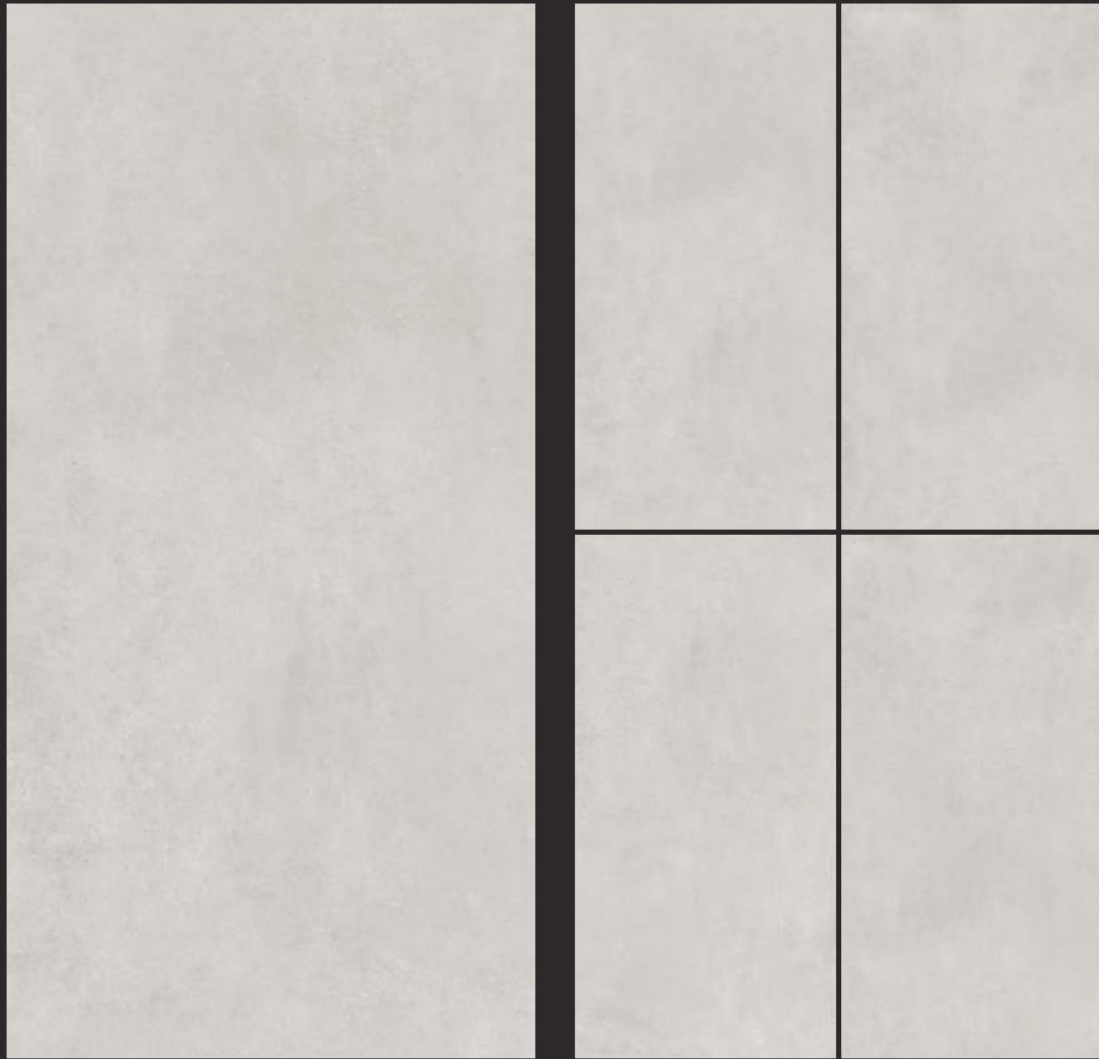


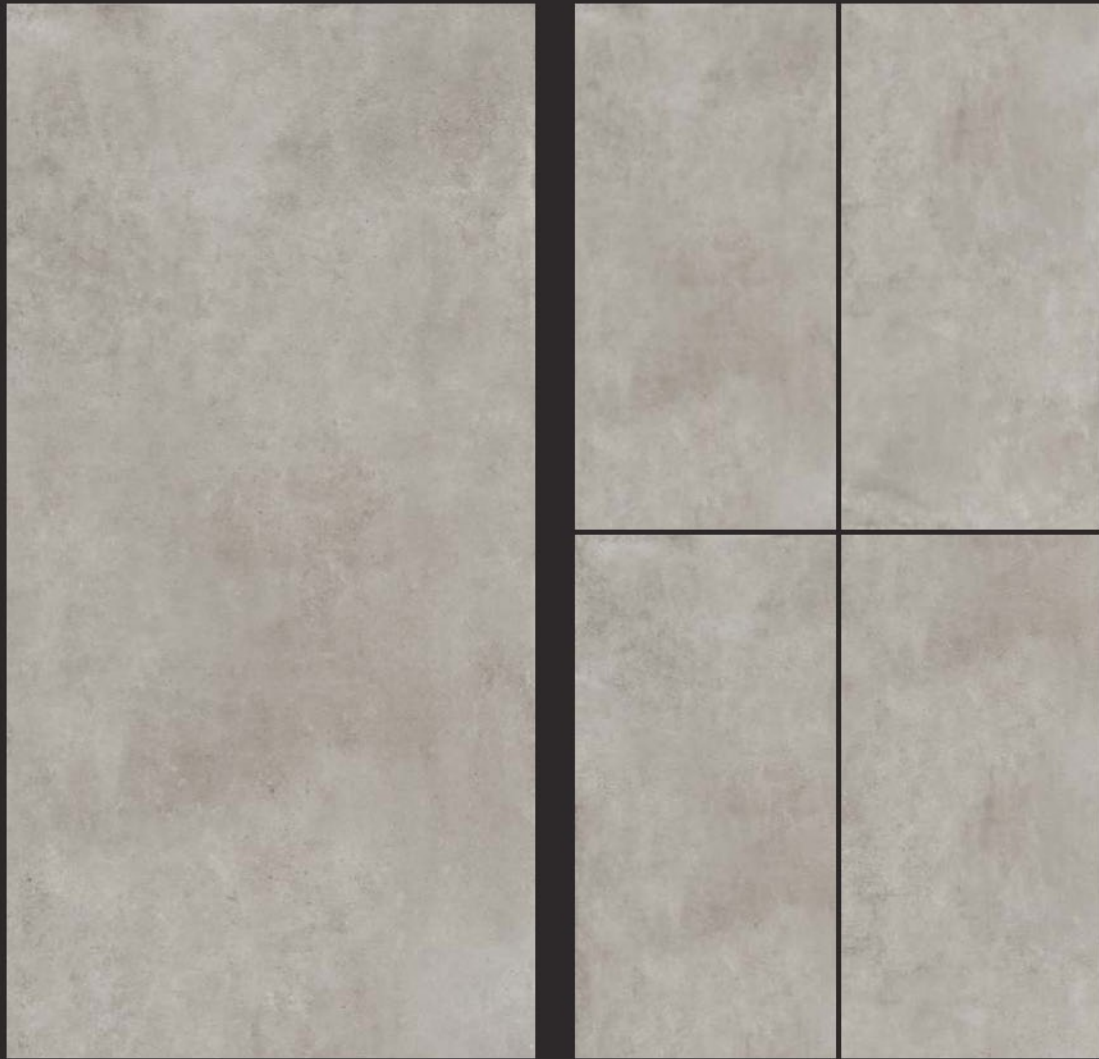
POLISHED / MATT
750 x 1500MM



Montreal Bianco



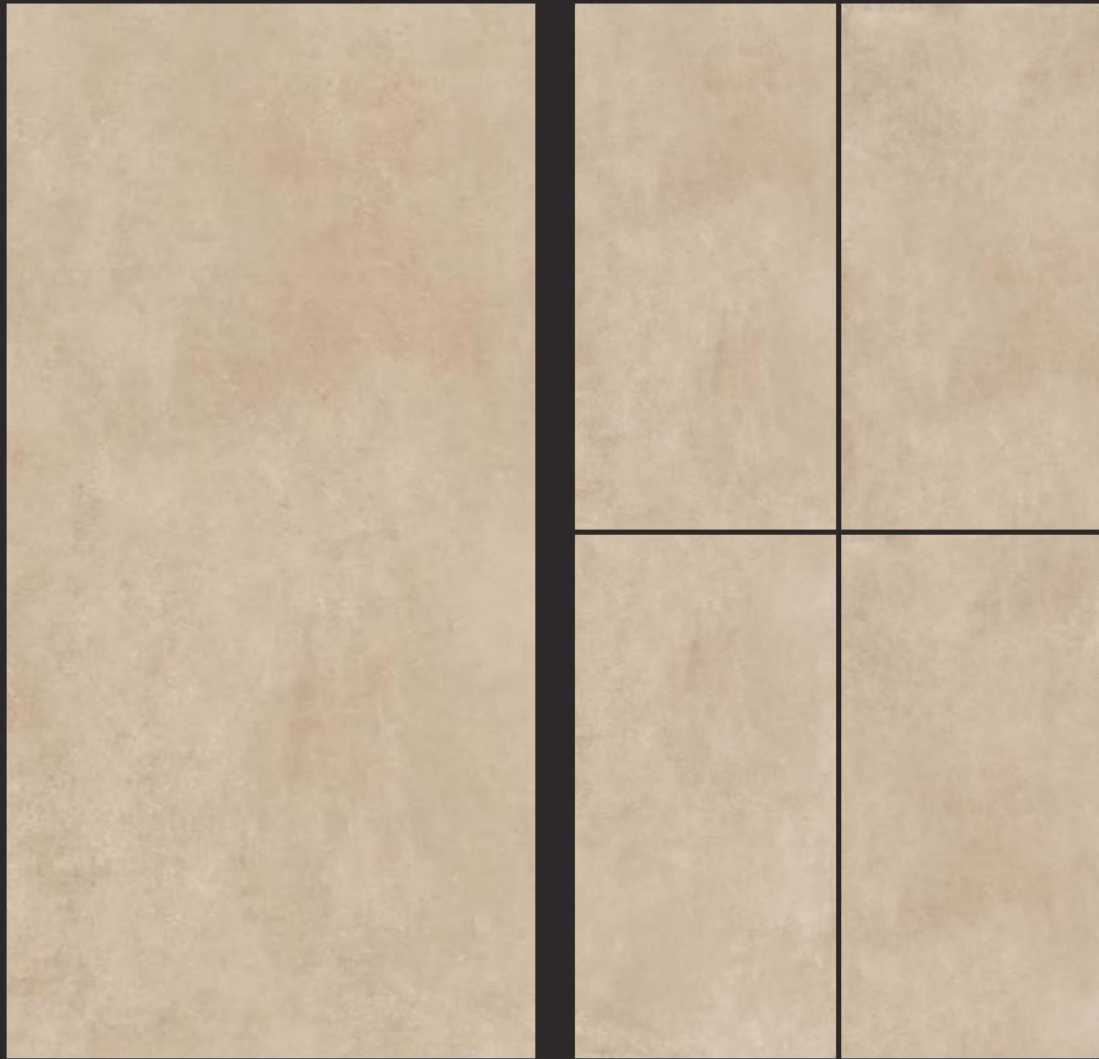
POLISHED / MATT
750 x 1500MM



Montreal Grey



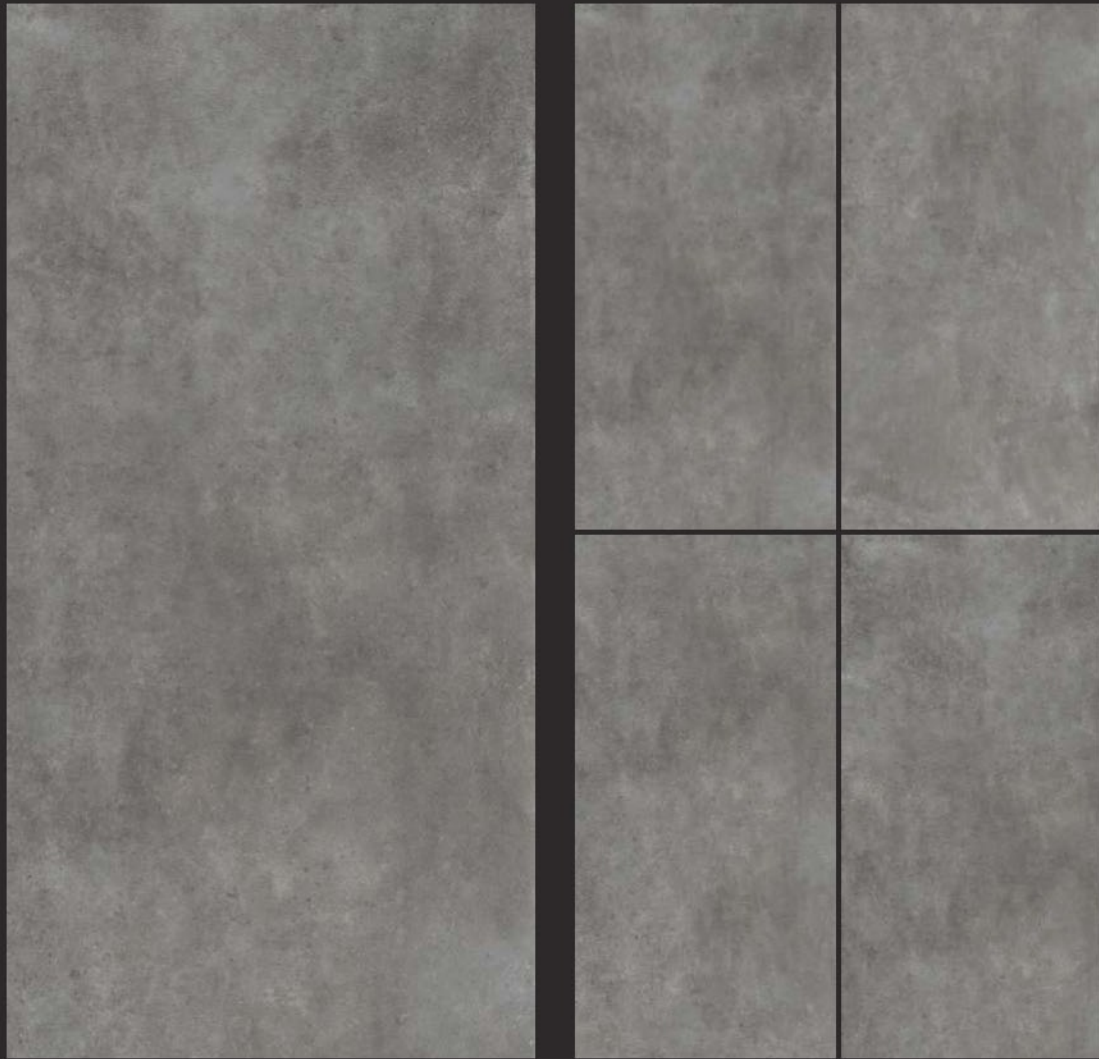
POLISHED / MATT
750 x 1500MM



Montreal Beige



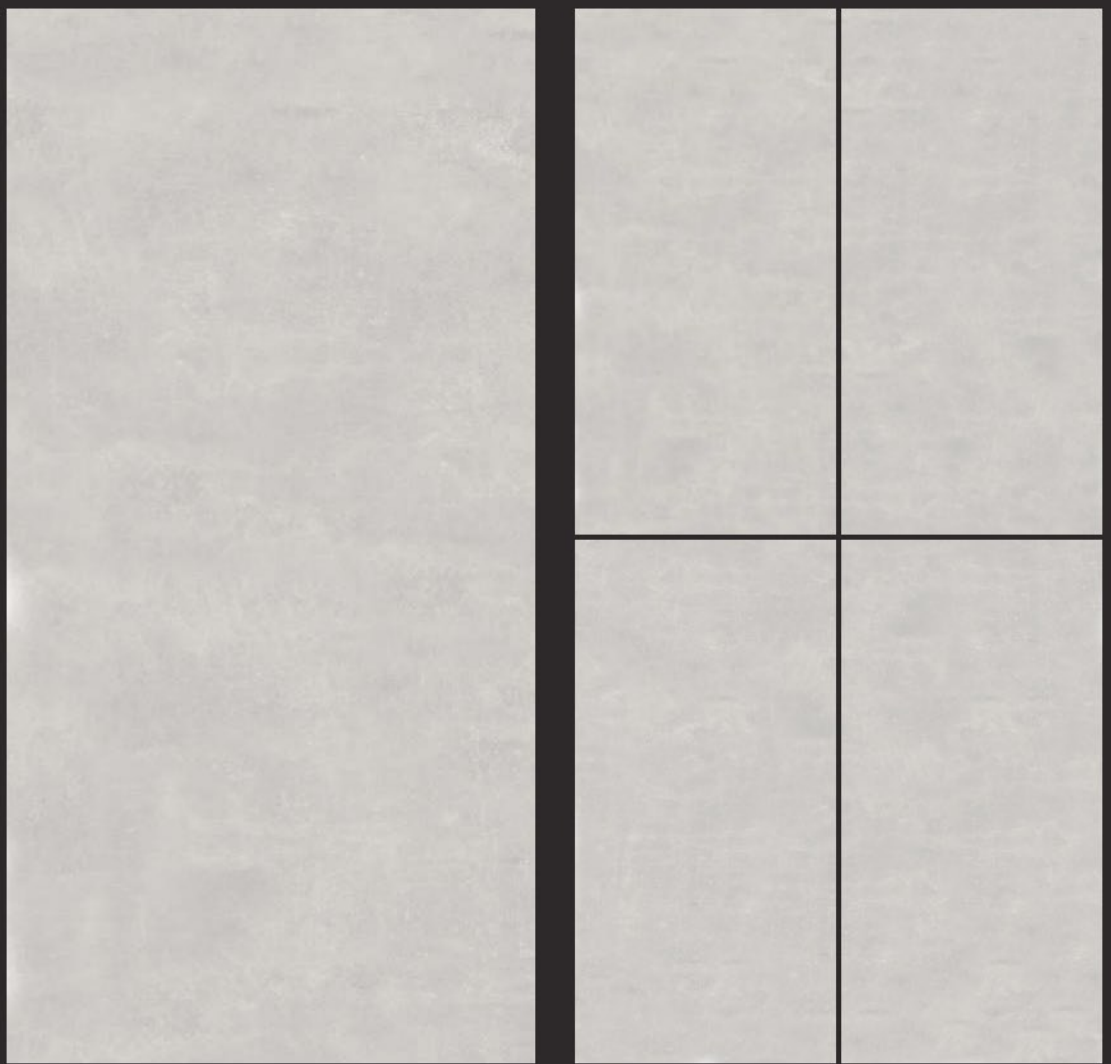
POLISHED / MATT
750 x 1500MM



Montreal Dark Grey



POLISHED / MATT
750 x 1500MM

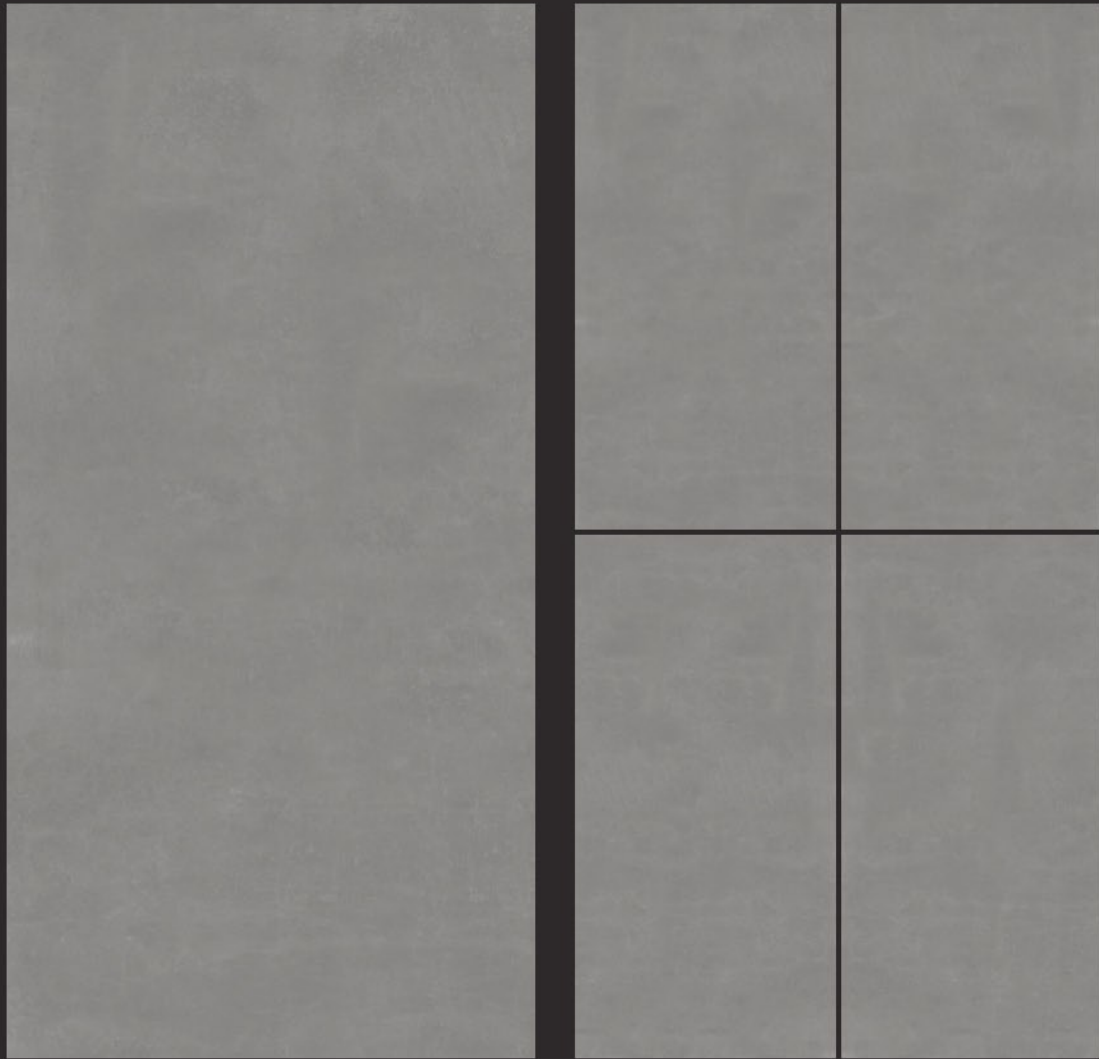


Glocal Bianco

RANDOM
EFFECTS



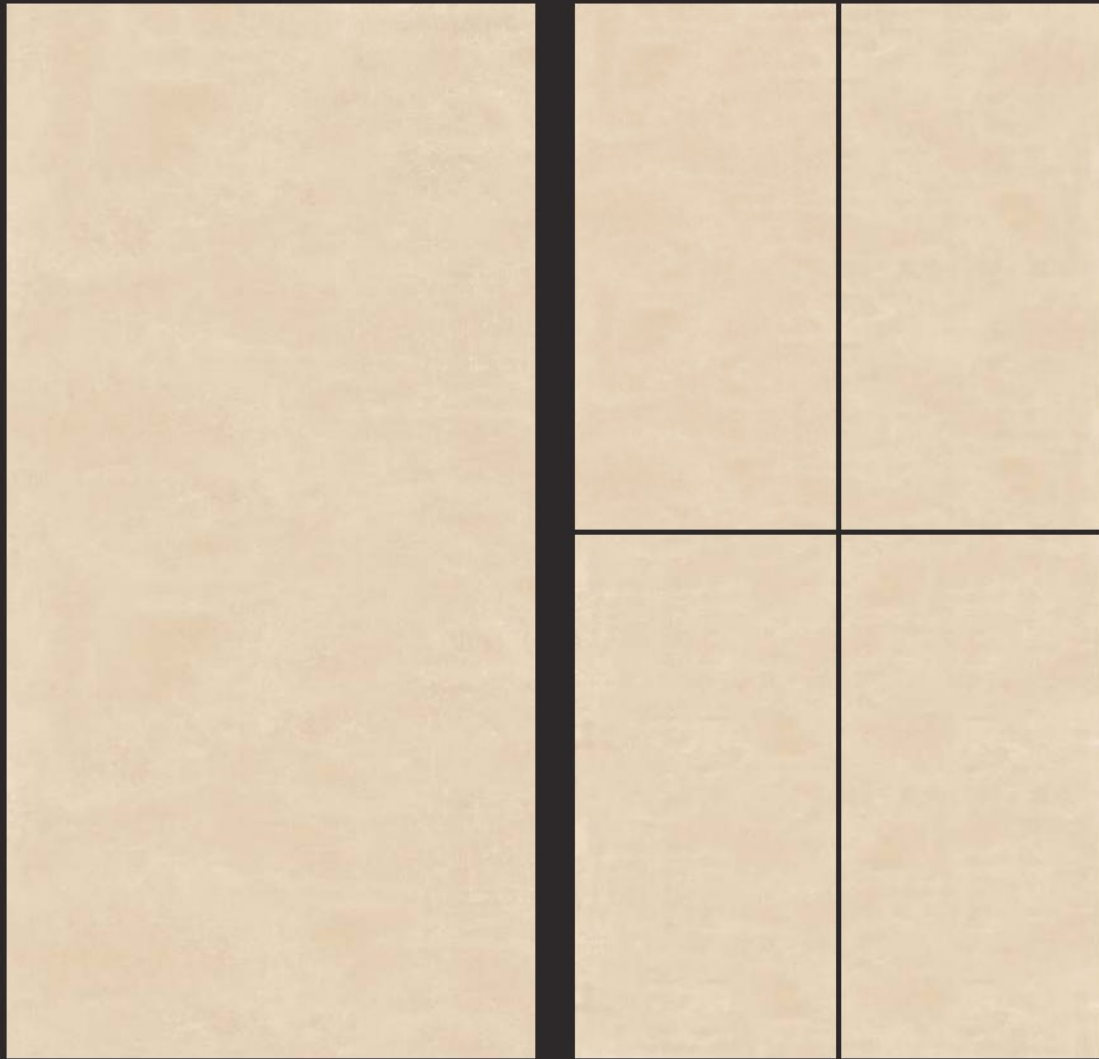
POLISHED / MATT
750 x 1500MM



Glocal Grey



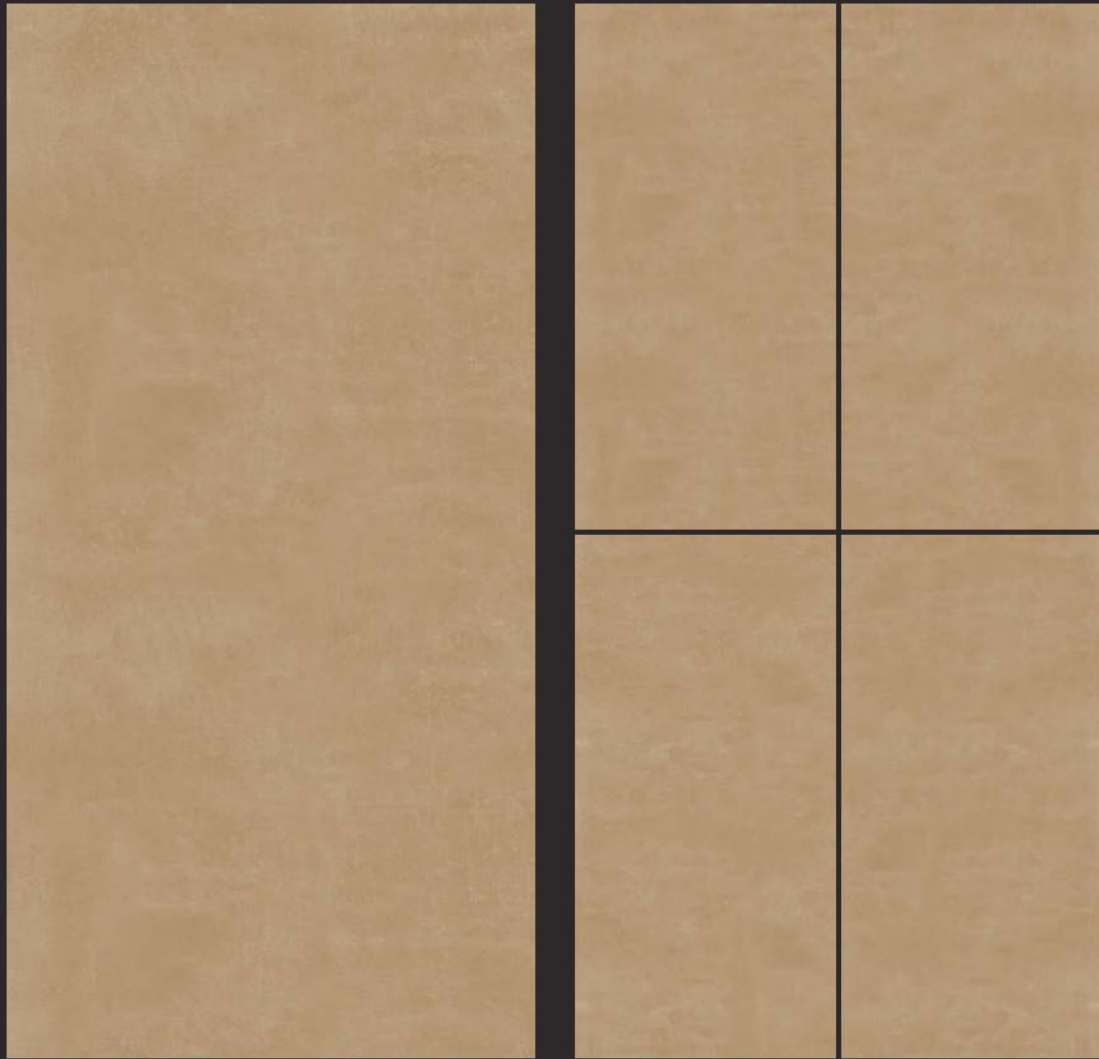
POLISHED / MATT
750 x 1500MM



Glocal Crema



POLISHED / MATT
750 x 1500MM



Glocal Beige

RANDOM
EFFECTS 



TECHNICAL SPECIFICATIONS - GLAZED VITRIFIED TILES (GROUP BIa)

| CHARACTERISTIC | TEST METHOD | INTERNATIONAL STD ISO 13006/EN 176 GROUP BIa | OUR VALUE |
|--|--------------|---|--------------|
| DIMENSION & SURFACE QUALITY | | | |
| Deviation In Length | ISO-10545-2 | ±0.6% | ±0.2% |
| Deviation In Thickness | ISO-10545-2 | ±5% | ±4% |
| Straightness of Sides | ISO-10545-2 | ±0.5% | ±0.2% |
| Rectangularity | ISO-10545-2 | ±0.6% | ±0.2% |
| Surface Flatness | ISO-10545-2 | ±0.5% | ±0.2% |
| PHYSICAL & THERMAL PROPERTIES | | | |
| Water Absorption | ISO-10545-3 | <0.5% | <0.2% |
| Mohs Hardness | EN-101 | Min.3 | Min.3 |
| Flexural Strength | ISO-10545-4 | >35 N/mm2 | >40N/mm2 |
| Skid Resistance (Friction Coefficient) | ISO-10545-17 | - | <0.2 (R9) |
| Breaking Strength | ISO-10545-11 | >1113 N | >1800N |
| Frost Resistance | ISO-10545-12 | Frost Proof | Frost Proof |
| Thermal Shock Resistance | ISO-10545-9 | No Damage | No Damage |
| Moisture Expansion | ISO-10545-10 | NIL | NIL |
| Resistance to Surface Abrasion | ISO-10545-7 | - | PEI III & IV |
| CHEMICAL PROPERTIES | | | |
| Chemical Resistance | ISO-10545-13 | No Damage | No Damage |
| Color Resistance | ISO-10545-16 | No Damage | No Damage |
| Stain Resistance | ISO-10545-14 | Resistant | Resistant |

PACKING DETAILS :

| Tiles Size (mm) | Pcs. / Box | Sq. Mtr. / Box | Box weight (approx.) |
|-----------------|------------|----------------|----------------------|
| 750x1500 mm | 2 | 2.25 | 48.0 Kgs. |

PALLET PACKING & CONTAINER LOADABILITY :

PATTERN 1 :

| Loadability (boxes / 1x20') | Loadability (sq mtr / 1x20') | no. of boxes / pallet | no. of pallets | pallet weight (kgs.- approx.) | Pallet size (mm) (L x W x H) | Position of tiles in the pallet | total weight of FCL (kgs.- approx.) |
|-----------------------------|------------------------------|-----------------------|----------------|-------------------------------|------------------------------|---------------------------------|-------------------------------------|
| 540 | 1215 | 40 | 12 | 1950 | 1120 x 940 x 1620 | 1500mm side vertical | 26400 |
| | | 10 | 6 | 500 | 1520 x 760 x 550 | horizontal | |

PATTERN 2 :

| Loadability (boxes / 1x20') | Loadability (sq mtr / 1x20') | no. of boxes / pallet | no. of pallets | pallet weight (kgs.- approx.) | Pallet size (mm) (L x W x H) | Position of tiles in the pallet | total weight of FCL (kgs.- approx.) |
|-----------------------------|------------------------------|-----------------------|----------------|-------------------------------|------------------------------|---------------------------------|-------------------------------------|
| 540 | 1215 | 27 | 20 | 1320 | 1550 x 760 x 860 | 750mm side vertical | 26500 |

DISCLAIMER : Company reserves the right to delete and amend either totally or partially, any of the colors, shapes, sizes, reference and other technical specifications contained in this catalogue at anytime. The colors shown of tiles in this catalogue are purely illustrative and limited to printing process, please refer actual sample before final selection. The details of sizes, colors, references should be verified for typographical errors.